



# Buckeye Trail Association's Pretty Run Preserve

## BTA Pretty Run Preserve

Established January 4<sup>th</sup>, 2010

### Status

- Trail Type: Developed hiking trail
- Buckeye Trail Miles: 3.5
- Acreage: 230
- County: Vinton
- Preservation Tool: Fee simple acquisition
- BT Section: Old Man's Cave

### Natural and Cultural Resources

- Tributary of the North Branch of Pretty Run
- Rare Cucumber Magnolia tree
- Historic log cabin

### Significance

- Permanent protection of the trail corridor
- Key campsite location between Hocking Hills State Park and Tar Hollow State Forest
- Concurrent North Country National Scenic Trail and American Discovery Trail

On January 4<sup>th</sup> 2010, the Buckeye Trail Association took the step of preserving 3.5 miles of the Buckeye Trail in northern Vinton County in southeastern Ohio by purchasing the Riddle parcels, beginning the BTA's Pretty Run Preserve. These first 190 acres sit atop the ridges and include streams that feed into the North Branch of Pretty Run. The acquisition provides an overnight destination for backpackers on the Buckeye Trail in a scenic and historic setting. This property is at the center of the larger vision of a fully protected corridor of off-road Buckeye trail between Hocking Hills State Park and Tar Hollow State Forest.

Situated off the beaten path on the southern edge of the Hocking Hills Region, black bear and bobcat have been sighted in the area by volunteers and visitors as they worked and hiked around the rock outcroppings and stream bottoms.

The first property that was protected from potential development and fragmentation was not a "pristine" environment, portions of the property had been logged while others had been left unaltered. Since that point the forest has begun to regenerate a hardwood forest canopy again. Protecting the lands through which the Buckeye Trail passes is important to protecting that view, wildlife, and the experience we have come to expect hiking along the trail. Portions of Pretty Run resemble the nearby Wayne National Forest that was once dubbed "the lands that nobody wanted" due to the stripped and eroding hills in the 1930's. Thanks to forward thinking today we enjoy the return of a healthy forest.

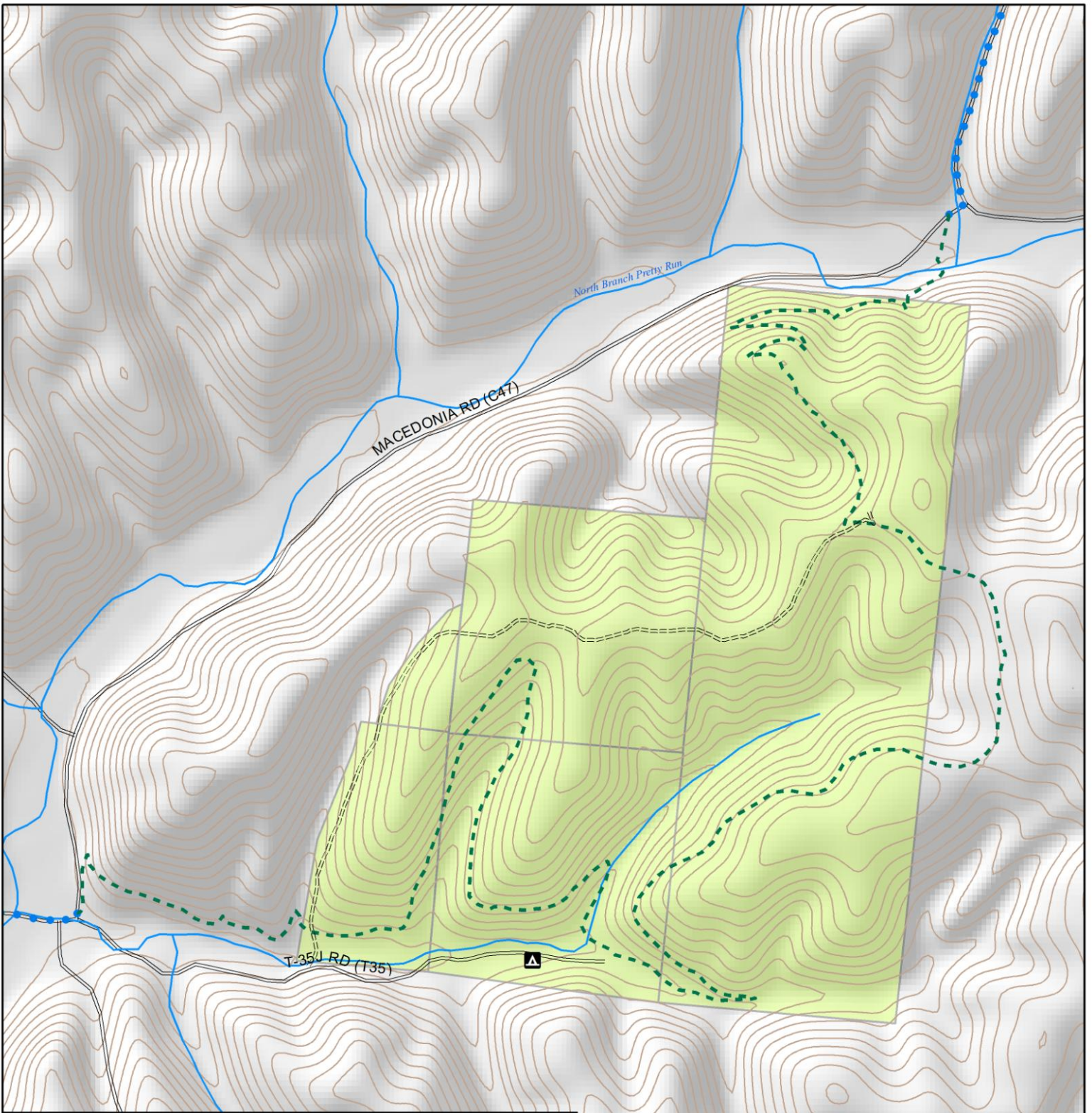
On December 4<sup>th</sup> 2012, we added the 40 acre Rice parcel to the Pretty Run Preserve. The property contains a historic log cabin purportedly built in 1839. The property also has a large open field for camping and a rock outcropping just above a scenic tributary of the North Branch of Pretty Run. The purchase protected 0.75 miles of trail surrounded by the initial purchase of the Riddle Tract.



*Follow the Blue Blazes*

## Project Partners and Sponsors





# Buckeye Trail Association

Pretty Run Preserve

## Legend

- Buckeye Trail (On Road)
- - - Buckeye Trail (Off Road)
- BTA Protected Area



Map Location

0 1:9,000 0.3 Miles